



# Before They Wore Wings

A STUDY OF ROCHESTER BASEBALL UNIFORMS BEFORE 1928

## PART TWO 1917-1927

The following pages document early baseball uniforms from Rochester, NY. This study begins with the city's amateur and professional teams of the nineteenth century and ends in 1927, the last year before the professional team became the Rochester Red Wings.

The main resource for this study is black-and-white newspaper photography. Therefore, most uniform renderings are shown in grayscale, with color information still to be discovered. The photographs used to determine each uniform style are included in these pages. When a player in a photo is known, the years that player was with Rochester are also noted, i.e., Ganzel (09-15).

Research and uniform drawings by Craig Brown.

Last updated September 4, 2013

Photo: The 1912 Rochester team in the home "dugout" at Bay Street Baseball Park. This photo is the copyright and property of the Rochester Museum and Science Center, Rochester, New York, and used in this document for educational purposes only.

# 1917 HOME

Rochester Hustlers, International League



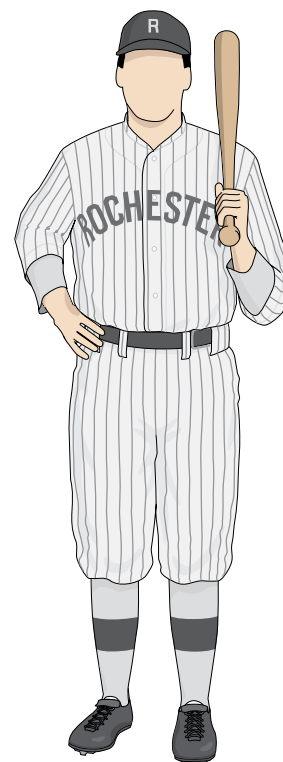
From the Albert R. Stone Negative Collection, Rochester Museum & Science Center, Rochester, N.Y.

**1917 team.** Opening Day, printed in the RH May 4, 1917. This photo shows the team's new light-colored socks with a single dark band. Rochester players are at left, Richmond players at right (and all appear very cold).



Albert R. Stone Negative Collection, Rochester Museum & Science Center, Rochester, N.Y.

**1917, Doolan (17).** Opening Day, published in the RH May 4, 1917. This is the only year Mickey Doolan managed (and played for) the team. The 1917 uniform was the first to have a buttoned shirt (not a pull-over) and belt tunnels on the hips. The pin stripes in 1917 were thicker than in previous years and this thicker style was used on home jerseys from 1917-1920 and again during 1922-1923. The city name, typically only found on road jerseys during this era, was displayed across the home jersey in arched block lettering. This was unusual; there were no ML clubs wearing their city name on home jerseys during this time.



1917 home

# 1917 HOME, continued

Rochester Hustlers, International League



From the Albert R. Stone Negative Collection, Rochester Museum & Science Center, Rochester, N.Y.



From the Albert R. Stone Negative Collection, Rochester Museum & Science Center, Rochester, N.Y.



From the Albert R. Stone Negative Collection, Rochester Museum & Science Center, Rochester, N.Y.



From the Albert R. Stone Negative Collection, Rochester Museum & Science Center, Rochester, N.Y.



From the Albert R. Stone Negative Collection, Rochester Museum & Science Center, Rochester, N.Y.



From the Albert R. Stone Negative Collection, Rochester Museum & Science Center, Rochester, N.Y.

**1917 or 1918 players.** Note thicker pin striping, belt tunnels at the hip and light-colored socks with dark band. Also note growing number of spectators gathering in left field stands at Bay Street from photo to photo. It is possible these photos were taken during late spring training in 1918 and that players were wearing the 1917 style uniform. Bare trees beyond left field stands indicates late April timeframe.



# 1917 HOME, continued

Rochester Hustlers, International League



From the Albert R. Stone Negative Collection, Rochester Museum & Science Center, Rochester, N.Y.



From the Albert R. Stone Negative Collection, Rochester Museum & Science Center, Rochester, N.Y.



From the Albert R. Stone Negative Collection, Rochester Museum & Science Center, Rochester, N.Y.



From the Albert R. Stone Negative Collection, Rochester Museum & Science Center, Rochester, N.Y.



From the Albert R. Stone Negative Collection, Rochester Museum & Science Center, Rochester, N.Y.

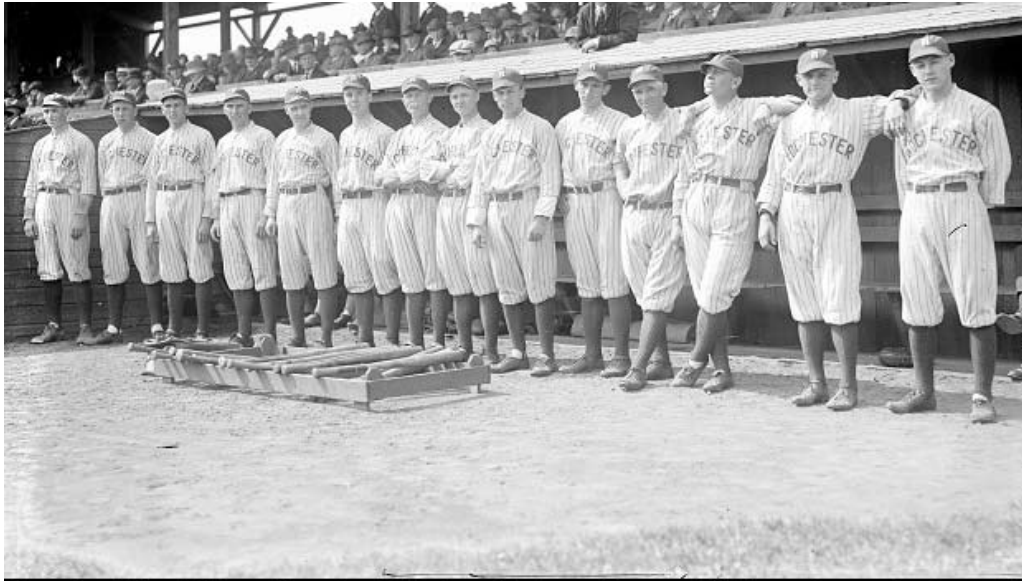


From the Albert R. Stone Negative Collection, Rochester Museum & Science Center, Rochester, N.Y.

**1917 or 1918 players.** Note thicker pin striping, belt tunnels at the hip and light-colored socks with dark band, all features of the 1917 and 1918 uniform. Bottom four photos also present good views of outfield wall, scoreboard and flag at Bay Street. It is possible these photos were taken during late spring training in 1918 and that players were wearing the 1917 style uniform. Bare trees beyond left field stands indicates late April timeframe.

# 1918 HOME

Rochester Hustlers, International League



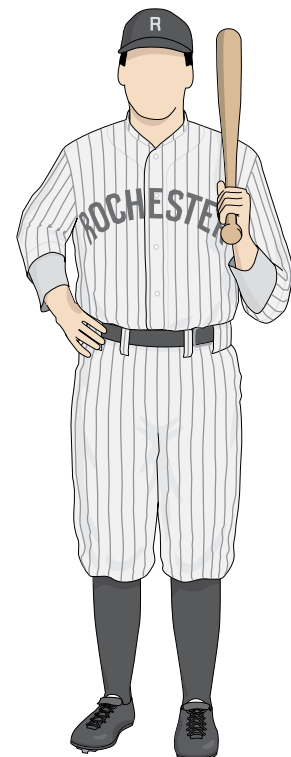
From the Albert R. Stone Negative Collection, Rochester Museum & Science Center, Rochester, N.

**1918 Team.** Opening Day, printed in the RH May 18, 1918. The uniform was a repeat of 1917 with the exception of the dark, solid socks, the only differentiation from previous year.



ive Collection, Rochester Museum &

**1918 Kane.** Taken at player tryouts at Bay Street, printed in the RH April 25, 1918. Photo shows good view of light-colored "R" insignia on cap. The "R" insignia was darker in tone during the 1920s. Kane did not make the 1918 team.



1918 home

# 1919 HOME

Rochester Colts, International League



the Albert R. Stone Negative Collection, Rochester Museum & Science Center, Rochester, N

**1919 Team.** Opening Day, printed in the RH May 14, 1919. The home uniform had a few minor changes compared to 1918: side belt tunnels were removed, the sock style was a repeat of two years earlier, see 1917, and the jersey lettering appeared to be lighter in tone than that of earlier years. The exception is Kelly (17, 19), shown at far left, who's jersey seemed to have darker lettering. Because of his height (6'-4"), was Kelly asked to wear his jersey from 1917?



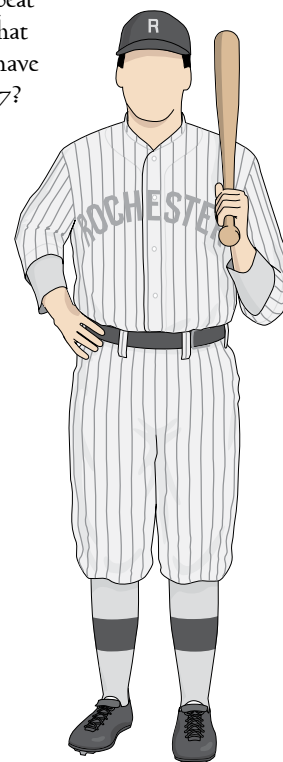
the Albert R. Stone Negative Collection, Rochester Museum & Science Center, Ro

**1919, Kelly (17, 19).** Taken at Bay Street and printed in the RH May 28, 1919. The lack of belt tunnels at the hips help to differentiate this uniform from 1917 or 1918.



the Negative Collection, Rochester Mus

**1919, Kelly (17, 19).** Another photo of Kelly, taken same day as photo at left. Shows belt tunnel in back of uniform and jersey without player number.

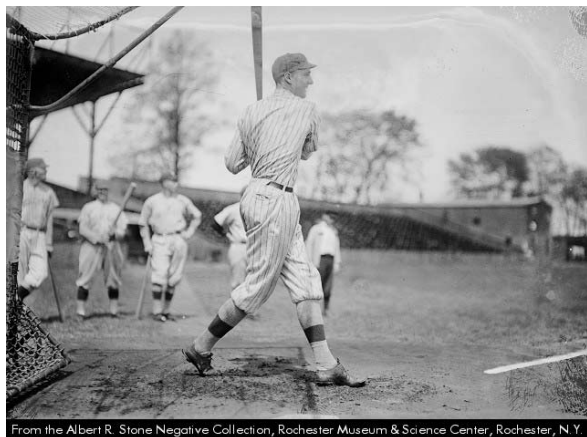


1919 home



# 1919 HOME, continued

Rochester Colts, International League



From the Albert R. Stone Negative Collection, Rochester Museum & Science Center, Rochester, N.Y.



From the Albert R. Stone Negative Collection, Rochester Museum & Science Center, Rochester, N.Y.

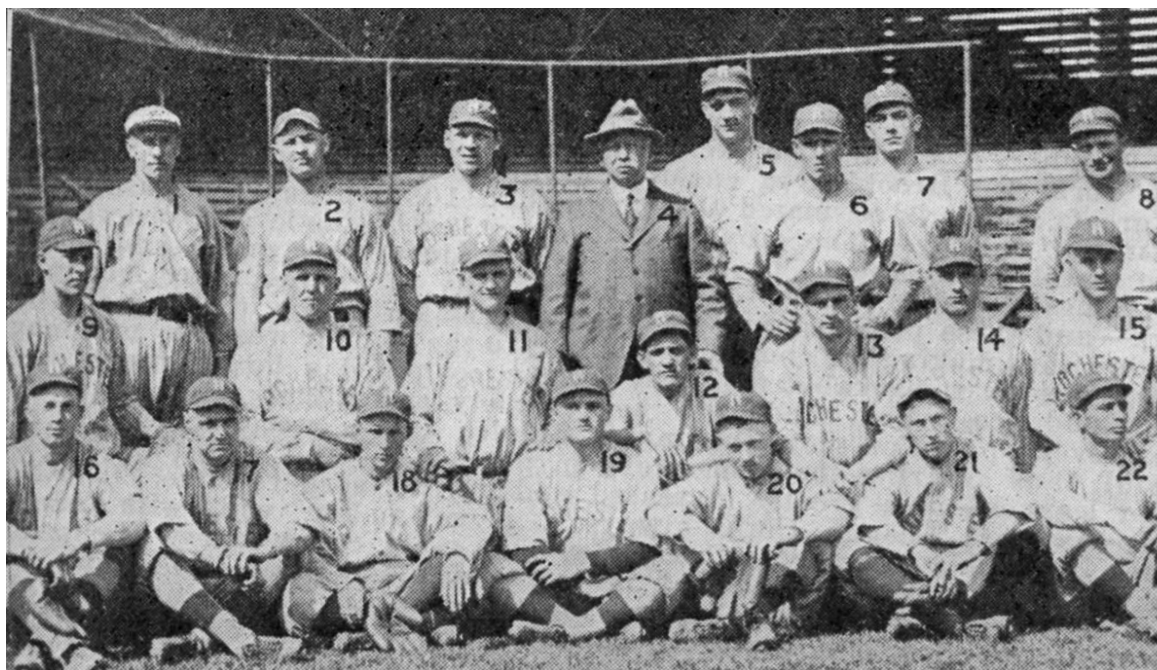


From the Albert R. Stone Negative Collection, Rochester Museum & Science Center, Rochester, N.Y.

**1919 players.** Taken at Bay Street, possibly in mid-May near the time of the home opener. Kelly (17, 19) is at top left. Note the players behind Kelly have light-toned lettering across their jerseys. Other players in photos are unidentified. Note belt tunnel in back of pants.

# 1918/1919 ROAD

Rochester Colts, International League



**1919 team.** This photo was printed in the RH April 27, 1919 and taken at the Philadelphia NL baseball park during exhibition games prior to the road opener in near-by Baltimore. Details of the uniform are hard to discern. It is assumed the team was wearing their road uniforms, possibly from the previous 1918 season. Only 10 of the players shown here actually played for the team in 1919, see notes below. Springer, top left, did not play for Rochester and was possibly wearing a uniform and cap from another team in photo. Three players in front appear to be wearing solid dark-colored socks similar to 1918 style. Lettering across jersey fronts seem to be lighter in tone similar to 1919 home jerseys, with the exception of #9 Sandberg (17, 22), #13 Brady (18) and #15 Grant (18), where lettering appears darker in photo. It is possible these three players were wearing road uniforms from a different year than others. More research is needed.

Players as described in the RH photo caption.

TOP ROW: 1 Springer, 2 Raymond (traded to Philadelphia), 3 Kolseth,

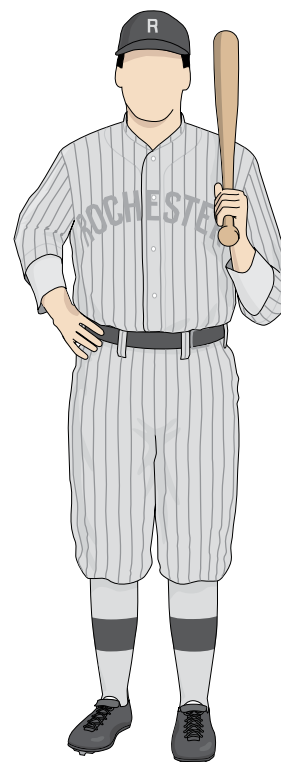
4 Irwin (manager), 5 Kelly, 6 O'Neill, 7 Bernhardt and 8 Shinault

MIDDLE: 9 Sandberg (sold to Toronto), 10 Most (to be sold), 11 Walsh, 12 Rodriguez,

13 Brady, 14 Friedman and 15 Grant (sold to Virginia League)

BOTTOM: 16 See, 17 Orr, 18 Pitt, 19 Reeves, 20 Brogan, 21 Adams and 22 Acosta

According to baseball-reference.com, only 10 of the 21 players shown (Acosta, Brogan, Kelly, O'Neill, Orr, Pitt, See, Shinault, Rodriguez and Walsh) played for team in 1919. One player, labelled as "Most" in RH caption, could actually have been "Kost" who played for the 1919 team. Several players shown above did not play for the 1919 team but did play for the 1918: Brady, Grant, Kolseth, Raymond and Reeves.

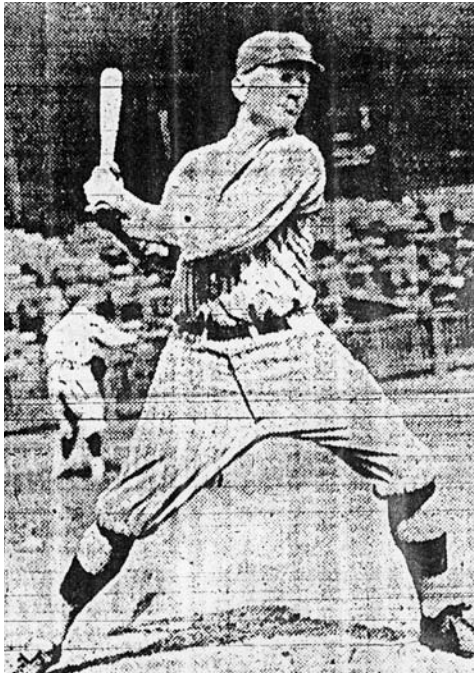


1918/1919 road



# 1918/1919 ROAD, continued

Rochester Colts, International League

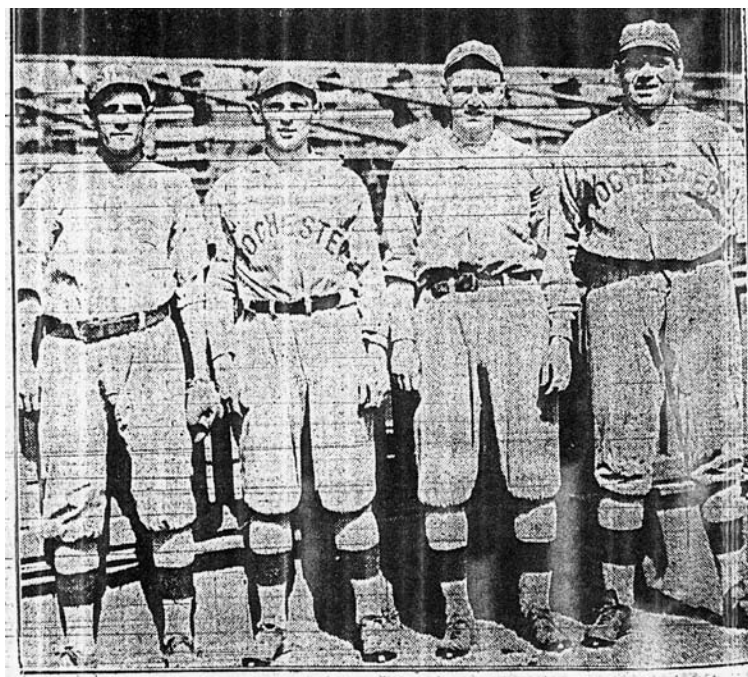


**1919 Shinault (19).**

Taken at Philadelphia and printed in the RH April 27, 1919. Photo most likely shows a road uniform. Pin stripes can be clearly seen. Socks match 1919 home uniform. Pants have belt tunnels at sides and two front belt loops.



**1919 Kelly (17, 19).** Taken at Philadelphia and printed in the RH April 29, 1919. Photo most likely shows road uniform. Thicker pin stripes, similar to home uniform from 1917 to 1919, can be clearly seen, as can the "R" insignia on the cap. Socks match 1919 home uniform. Pants have belt tunnels at side and two front belt loops.

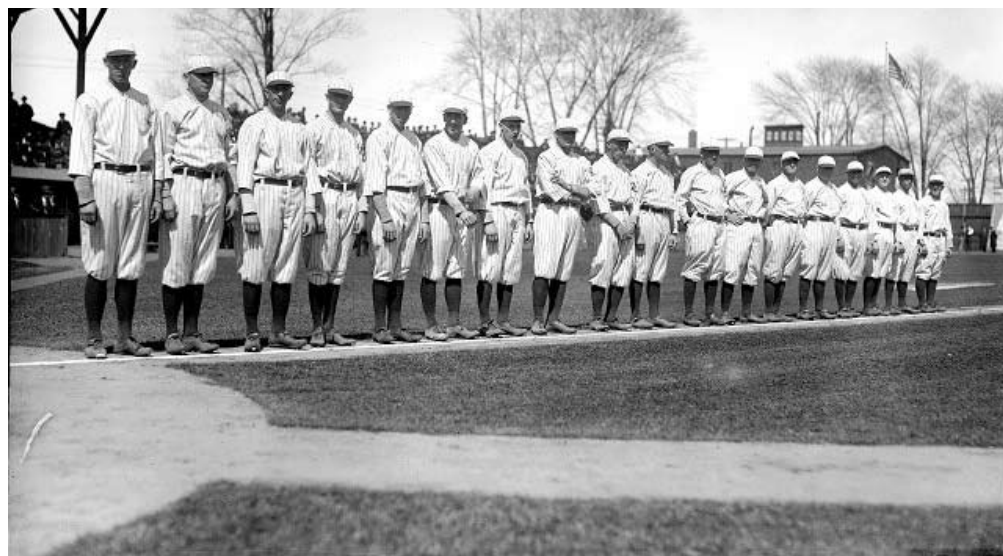


**1919, from left, Rodriquez (17, 19, 20), Brady (18), Orr (18, 19) and Kolseth (18).** Taken at Philadelphia and printed in the RH April 28, 1919. The poor quality of the photo make it hard to see uniform details, such as pin stripes. Photo does show varying degrees of tone on lettering across chest. Only Brady has pants with side belt tunnels..



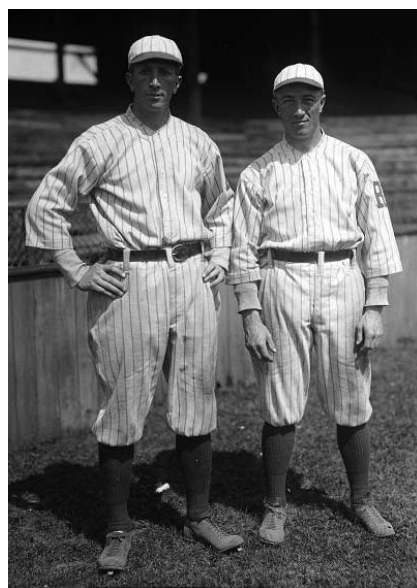
# 1920 HOME

Rochester Colts, International League



From the Albert R. Stone Negative Collection, Rochester Museum & Science Center, Rochester, N.Y.

**1920 Team.** Opening Day, printed in the RH May 6, 1920. The home jersey repeated the thick pinstripes from previous years, however, an "R" insignia on the left sleeve replaced the city name across the front. The white pin striped hat also distinguish the 1920 uniform. White caps with a colored brim were in vogue between 1915 and 1930. 14 of the 16 ML teams wore white caps at home in 1920, the most of any year.



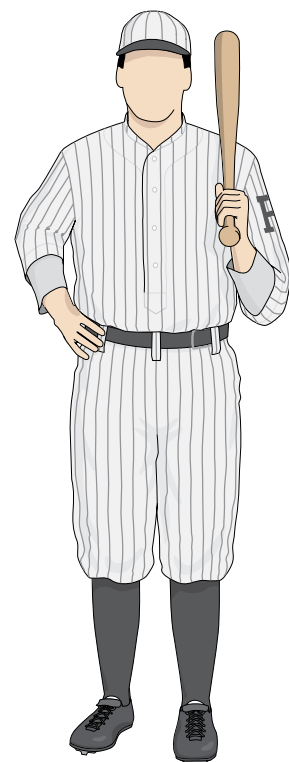
From the Albert R. Stone Negative Collection, Rochester Museum & Science Center, Rochester, N.Y.

**Undated, unidentified player (left) and Long (19, 20)** Most likely 1920. Note that the jersey returned to a pull-over style and that belt tunnels were not used on this uniform.



From the Albert R. Stone Negative Collection, Rochester Museum & Science Center, Rochester, N.Y.

**Undated, Long (19, 20) and unidentified player.** Most likely 1920, photo offers good view of "R" insignia on sleeve.



1920 home

# 1921 HOME

Rochester Tribe, International League



Stone Negative Collection, Rochester Museum & Science Center, Rochester

**1921 team.** Opening Day, printed in the RH May 5, 1921. The visiting team was the Reading Aces (far left). Photo shows pants without belt tunnels.



**1921 Blake (21, 22, 33).** Published in the RH May 5, 1921 on Opening Day, and showing belt loops on pants. Blake was the starting pitcher.



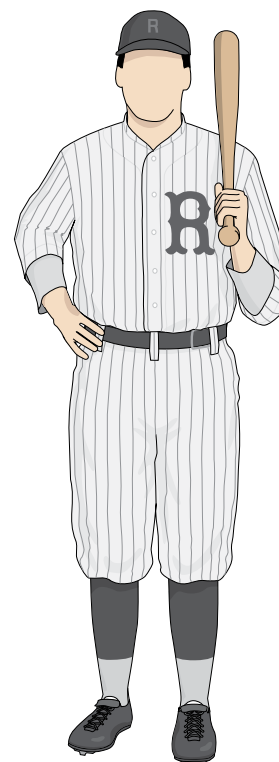
n, Rochester Museum & Science Center, Rochester, N.Y.

**1921 Merkle (21-25).** Opening Day, published in the RH May 5, 1921. Uniform utilized a return of a "fancy style" large initial on the left breast (see 1908 for first use). This insignia was used on home jerseys from 1921 to 1925. The 1921 uniform returned to a thin pin-stripe style, first used on home uniforms during 1912-1916.



ection, Rochester Museum & Science Cent

**Undated, unidentified.** Most likely taken in 1921, this photo shows a block-letter "R" insignia in a dark color against a dark-colored hat, a style used by the team until 1929.

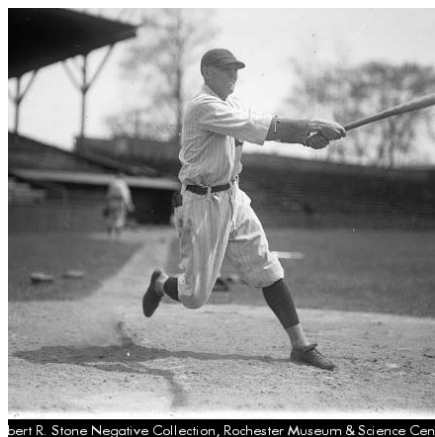


1921 home

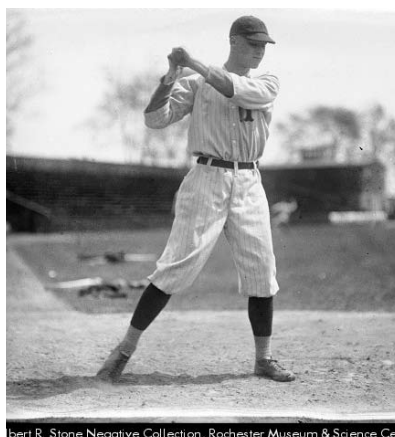


# 1921 HOME, continued

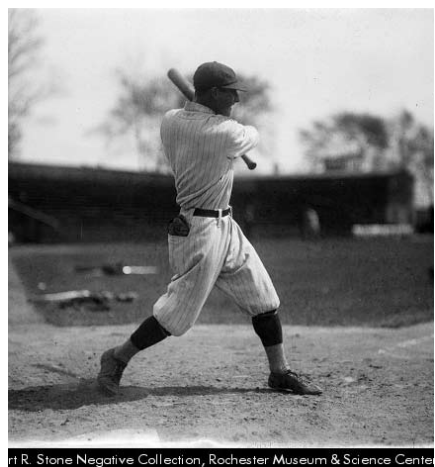
Rochester Tribe, International League



bert R. Stone Negative Collection, Rochester Museum & Science Center



bert R. Stone Negative Collection, Rochester Museum & Science Center



bert R. Stone Negative Collection, Rochester Museum & Science Center



Collection, Rochester Museum & Science Center, Rochester

**1921 or 1922 players.** It is possible these images were taken at Bay Street in early 1922 during pre-season training and where players were wearing the 1921 home uniform. Note trees outside grounds were beginning to leaf, indicating late April. Thinner pin stripes, three front belt loops, belt tunnel in back and two-tone socks shown here match the style of the 1921 home uniform. Lower right image above is Merkle (21-25).



A large initial using the "fancy lettering" style became popular again on uniforms in the 1920s. Here are two ML examples from 1922, Brooklyn NL, left, and Cleveland AL, right.

Research and drawings by Marc Okkonen

# 1921 ROAD A

Rochester Tribe, International League



From the Albert R. Stone Negative Collection, Rochester Museum & Science Center, Rochester, N.Y.

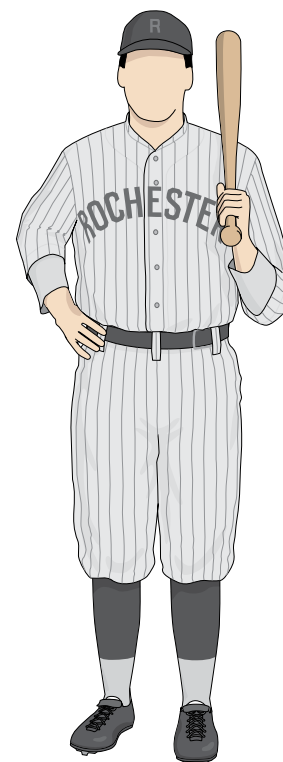


From the Albert R. Stone Negative Collection, Rochester Museum & Science Center, Rochester, N.Y.



From the Albert R. Stone Negative Collection, Rochester Museum & Science Center, Rochester, N.Y.

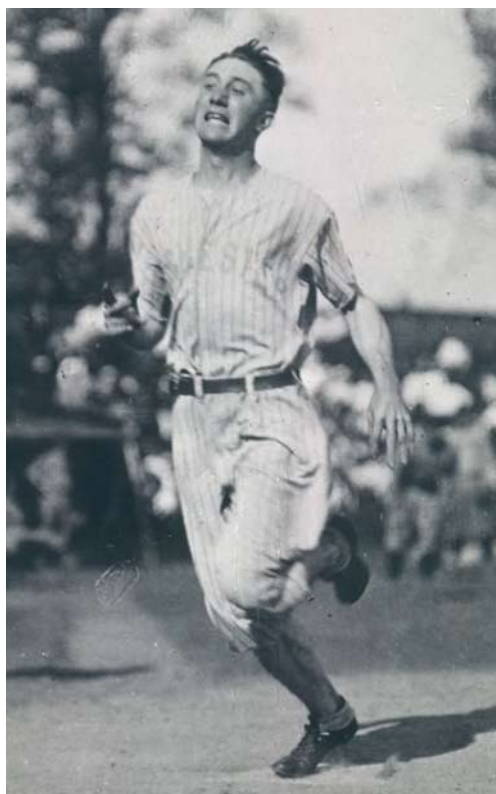
**1921 or 1922 players.** These photos were taken the same day as previous page (see equipment on ground near home plate). Note city name in block lettering, pin stripes, "sun" collar, full buttoned shirt with darker buttons, three front belt loops, no belt tunnels at the hips, and a sock style that matches the 1921 home uniform. It is possible these images were taken at Bay Street in early 1922, during pre-season training, and that players were wearing the road uniform from 1921. Note trees beyond bleachers that were beginning to leaf, indicating late April. Players above are unidentified.



1921 road A

# 1921 ROAD B

Rochester Tribe, International League

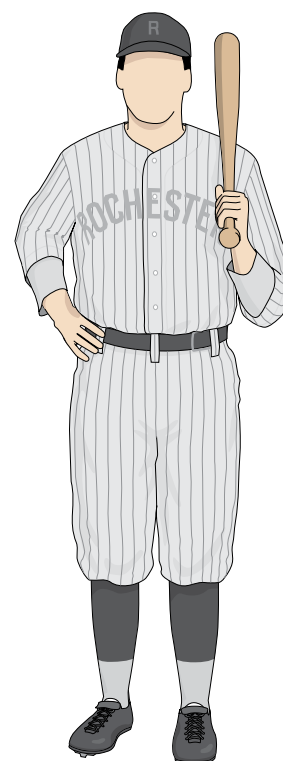


**1921 Archdeacon (21-23).** Printed in the RH, this is a photo of "The Comet" crossing home plate at Bay Street as he was timed running the bases on September 2, 1921. Archdeacon set a then record of 13.4 seconds. This photo shows Archdeacon with socks rolled down and wearing a collarless jersey. The block lettering across the chest was light in tone. This uniform does not match the previous page. Were there more than one style uniform worn during 1921? Or was Archdeacon wearing a circa 1919 (or 1920?) road jersey for this event. More research is needed.



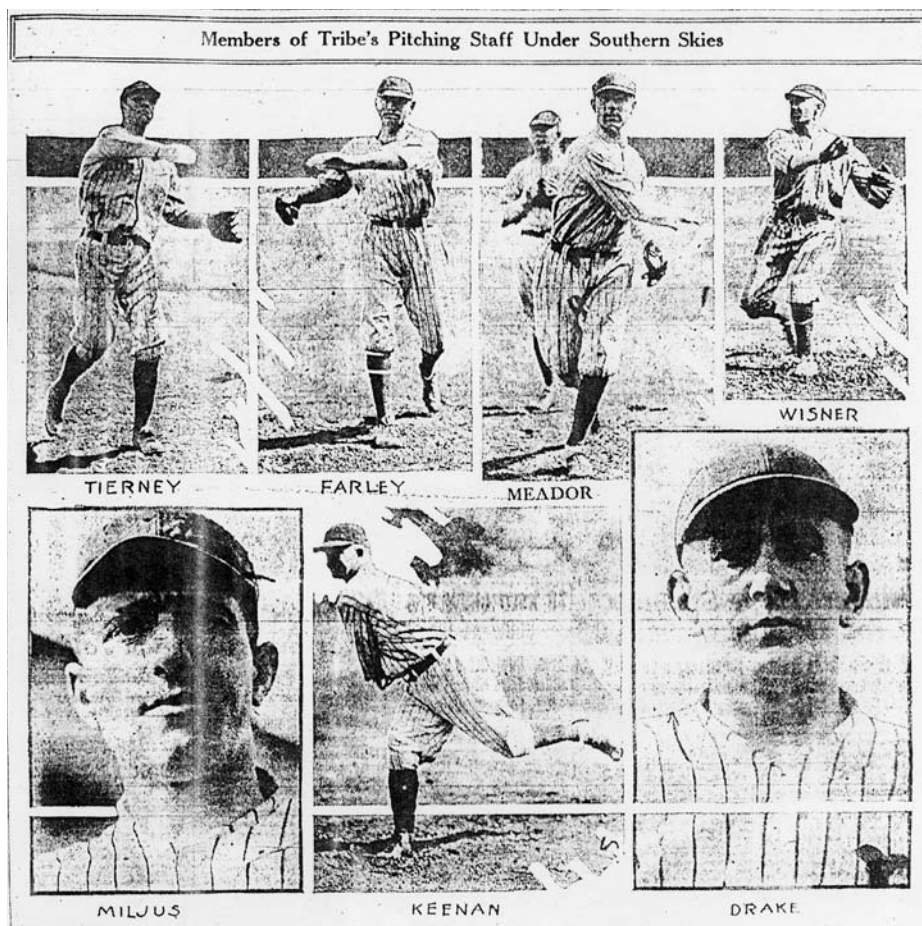
R. Stone Negative Collection, Rochester Museum & Science C

**1921 Archdeacon (21-23).** Close-up of Archdeacon and the collarless jersey, taken September 2, 1921 at Bay Street.



1921 road B  
(socks undocumented)



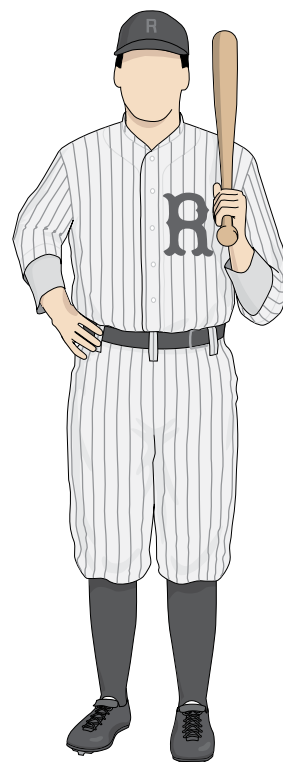


**1923 Tierney (22), Farley, Meador (22), Wisner (21-24, Miljus (23), Keenan (21-23) and Drake.** Spring training photos published in the RH on April 8, 1923. Only 3 players shown played for Rochester in 1923. Photos show a thicker pin stripe, front belt loop, no belt tunnels and dark socks. As per the custom, it is possible the team worn the 1922 uniform for spring training in 1923.



HARRY LUNTE

**1922 Lunte (22-25).** Published in the D&C May 4, 1922 as part of opening day coverage. It is unknown if this photo was made at opening day or earlier during spring training. Most likely, the 1922 home uniform was similar to the previous year, except the pin stripes returned to the heavier style of 1917-1920. No pictures have been discovered of the 1922 home opener and the uniforms worn that day. More research is needed.



1922 home

# 1922 HOME, continued

Rochester Tribe, International League



From the Albert R. Stone Negative Collection, Rochester Museum & Science Center, Rochester, N.Y.



From the Albert R. Stone Negative Collection, Rochester Museum & Science Center, Rochester, N.Y.



From the Albert R. Stone Negative Collection, Rochester Museum & Science Center, Rochester, N.Y.



From the Albert R. Stone Negative Collection, Rochester Museum & Science Center, Rochester, N.Y.



From the Albert R. Stone Negative Collection, Rochester Museum & Science Center, Rochester, N.Y.

**1922 or 1923 players.** The players on this page have no belt tunnels at the hip, a belt tunnel at back, and a variety of different styled socks, some of which match the 1921 style. These are most likely pictures from spring training at Bay Street in 1923, where players were wearing the 1922 home uniform. Note trees with new leaves indicating late April. Players are unidentified.

# 1922 ROAD

Rochester Tribe, International League



egative Collection, Rochester Museum & Science Center

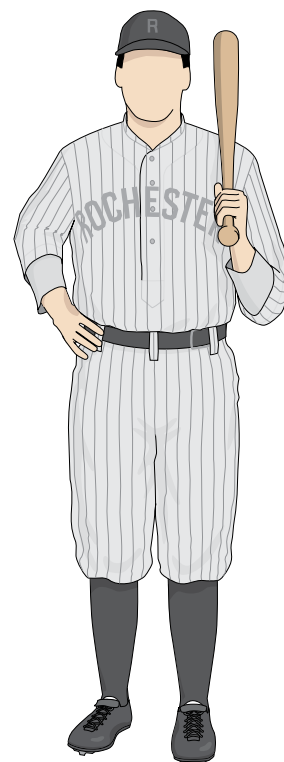
## 1923 Wisner (21-24).

Published in the RH on April 30, 1923. Possibly a spring training photo showing the 1922 road uniform from previous year. Visible uniform features are pin stripes, "sun" collar, block lettering and pullover buttoned jersey.



Collection, Rochester Museum & Science Center

**Undated, unidentified.** Generally similar in style to above photo, this road uniform has a "sun" collar, block lettering (possibly lighter in tone than above photo) and a pullover jersey. Buttons in both photos have identical placement. Bare tree in background indicates this is a spring training photo.



1922 road (sleeves, belt loops and socks undocumented)



# 1923 HOME

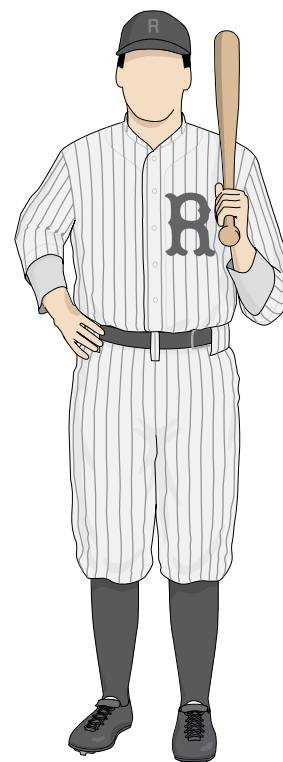
Rochester Tribe, International League



**1923 Team.** Opening Day, printed in the RH May 3, 1923. Uniform appears similar in style to previous year, with the exception of the pants which are now fashioned with side belt tunnels, a feature last used in 1918. Note players bowing heads in photo for a prayer or invocation.



**1923 Command (23).** Back flips for the big crowd on Opening Day, printed in the RH May 3, 1923.



1923 home



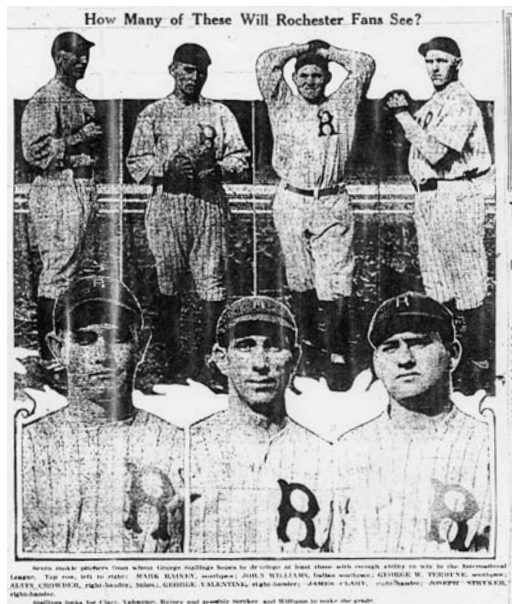
From the Albert R. Stone Negative Collection, Rochester Museum & Science Center, Rochester, N.Y.

**1923 Merkle (21-25), center.** Printed in the RH May 20, 1923. Merkle received his car of appreciation just like Ganzel did a decade before.

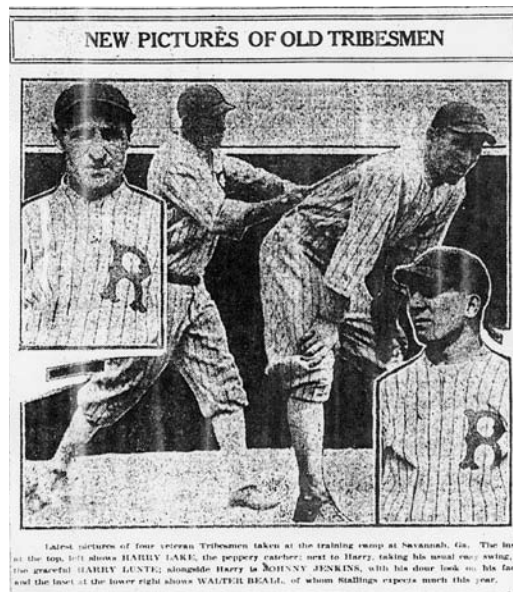


Albert R. Stone Negative Collection  
Museum & Science Center, Rochester, N.Y.

**1923 Dunning (23) and Drew (23-25).** Printed in the RH September 15, 1923 during late-season player tryouts. Dunning only played a few games in September 1923, but Dunn returned to play a full year in 1924. Note pin stripes, full buttoned shirt, single front belt loop and belt tunnels at hips. Socks shown here don't match 1923 style, but match more closely style from 1921.



**1924 top: Rainey, Williams, Terhune (24) and Crowder (24); bottom: Valentine, Clary and Styker (24).** Published in the RH on March 2, 1924 during spring training in Savannah, GA. Many players shown here did not make the team. Photos reveal fancy "R" on breast, thick pin stripes, single front belt loop, side belt tunnels and solid socks—all features of the 1923 home uniform that was repurposed for spring training in 1924.



**1924 clockwise from left, Lake (22-25), Lunte (22-25), Jenkins (23, 24) and Beall (23, 24).** Published in the RH on March 30, 1924, and stated as "new pictures" taken during spring training in Savannah. However, uncropped version of identical Jenkins photo from Stone Collection suggests this image was taken at Bay Street, most likely snapped during training a year earlier, in late April 1923. Pictures show uniform style won 1922-1923.



**1924 from left, Mathews (24), Clary and Crowder (24).** Published in the RH on April 20, 1924 before the start of the season. Photos show players wearing uniform style from 1922-1923, socks match 1923 style.



# 1923 HOME, continued

Rochester Tribe, International League



From the Albert R. Stone Negative Collection, Rochester Museum & Science Center, Rochester, N.Y.



From the Albert R. Stone Negative Collection, Rochester Museum & Science Center, Rochester, N.Y.



From the Albert R. Stone Negative Collection, Rochester Museum & Science Center, Rochester, N.Y.



From the Albert R. Stone Negative Collection, Rochester Museum & Science Center, Rochester, N.Y.



From the Albert R. Stone Negative Collection, Rochester Museum & Science Center, Rochester, N.Y.



From the Albert R. Stone Negative Collection, Rochester Museum & Science Center, Rochester, N.Y.

**1923 or 1924 players.** Note thicker pin stripes, full buttoned shirt, single front belt loop, belt tunnels at hips and solid socks. It is possible these pictures at Bay Street are of spring training in 1924 where players wore the 1923 home uniform. Note bare trees in background indicating late April.

# 1922, 1923 HOME

Rochester Tribe, International League



From the Albert R. Stone Negative Collection, Rochester Museum & Science Center, Rochester, N.Y.



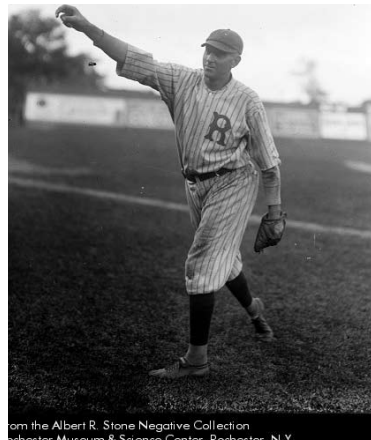
From the Albert R. Stone Negative Collection, Rochester Museum & Science Center, Rochester, N.Y.



Negative Collection, Rochester Museum & Science



Collection, Rochester Museum & Science Center, Rochester



om the Albert R. Stone Negative Collection  
Rochester Museum & Science Center, Rochester, N.Y.



From the Albert R. Stone Negative Collection, Rochester Museum & Science Center, Rochester, N.Y.



From the Albert R. Stone Negative Collection, Rochester Museum & Science Center, Rochester, N.Y.

**1922-1924 players.** Players shown here are wearing uniform from 1922-1923 period. Pictures were probably taken during spring training, 1923-1924. Note thicker pin stripes, full buttoned shirt, single front belt loop, belt tunnels at the hips and solid socks. Several players have solid light-colored socks and player at middle left has dark stripes on dark socks. Also note deteriorating condition of stadium walls, most likely Bay Street. Top left: Jenkins (23, 24) photo possibly made in late April 1923 at Bay Street, bottom left, possibly Beall (23, 24).



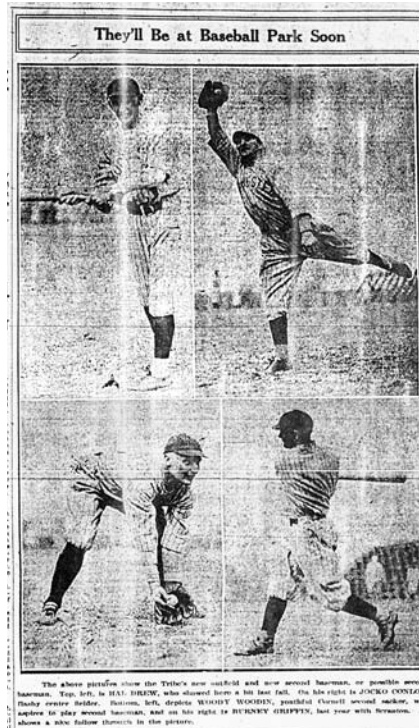
# 1923 ROAD

Rochester Tribe, International League

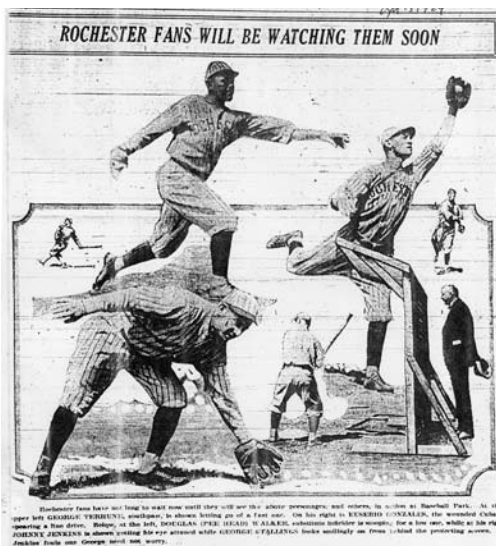


R. Stone Negative Collection, Rochester Museum & Science Center

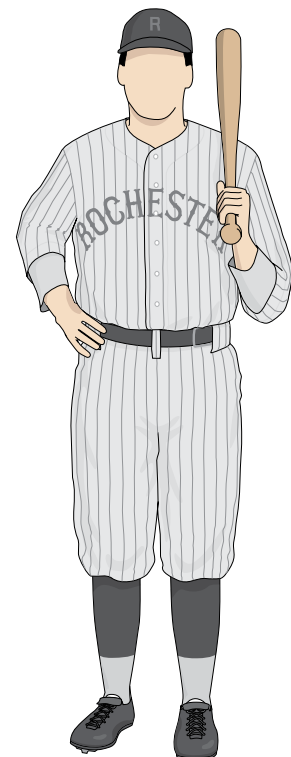
**1924 Peterson (23, 24).** This image was used in the RH on March 2, 1924 as part of a pre-season photo collage. Peterson played only 1 game in 1923 for Rochester, suggesting this was an image from early 1924. Peterson was most likely wearing the 1923 road jersey repurposed for 1924 spring training. Note collarless style and city name in "fancy" lettering across chest.



**1924 clockwise top left, Drew (23-25), Conlon (24-26), Griffin (23, 24) and Wooden.** Published in the RH on March 23, 1924 and taken during spring training in Savannah. Photos of Drew and Conlon show a road uniform with city name displayed in fancy-style lettering. This was most likely the 1923 road uniform repurposed for spring training 1924.



**1924 clockwise from top left, Terhune (24), Jenkins (23, 24), and Walker (24).** Published in the RH on April 13, 1924 before the start of the season. Photos reveal white pin-striped cap with dark bill, fancy lettering across chest (top two players only), thick pin stripes on jersey and pants, a single front belt loop, side belt tunnels, and dark and white socks. This was most likely the 1923 road uniform worn during 1924 spring training. The pin-striped hat may have been the 1920 hat, reused for spring training. More research is needed.



1923 road



# 1924 HOME

Rochester Tribe, International League



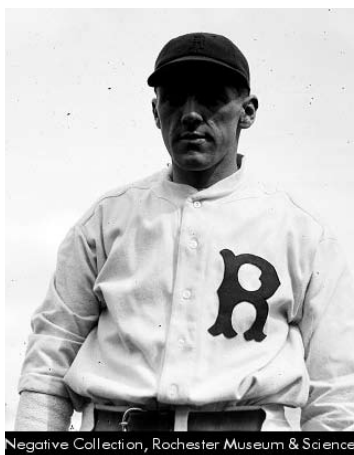
Albert R. Stone Negative Collection, Rochester Museum & Science Center, Rochester, NY

**1924 Team.** Opening Day, printed in the RH May 2, 1924.



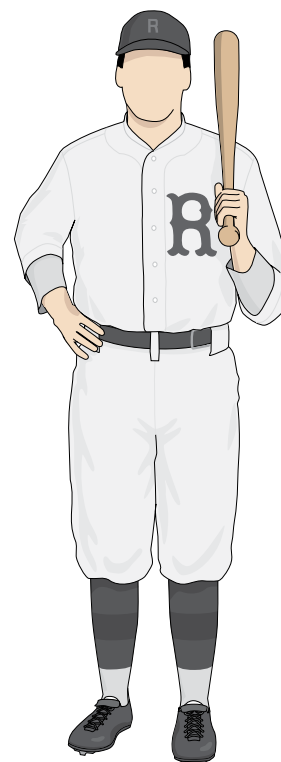
Negative Collection, Rochester Museum & Science Center

**Undated, unidentified.** Taken in 1924 or 1925, this is the first home uniform since 1911 that did not have pin stripes. One quarter of the ML teams dropped pin stripes from their uniform in 1924 or 1925.



Negative Collection, Rochester Museum & Science Center

**Undated, unidentified.** Taken in 1924 or 1925, it is possible the 1924 uniform can be distinguished from the 1925 uniform by the single belt loop in front.



1924 home

# 1925 HOME

Rochester Tribe, International League



Museum & Science Center, Rochester, N.Y.

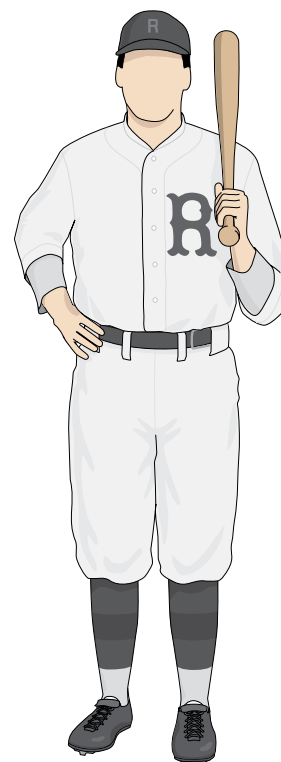
## 1925 Team, above.

Opening Day, printed in the RH April 30, 1925. Note one of the Rochester players was wearing a NY (NL) sweater.



on, Rochester Museum & Science Center, Rochester, N.Y.

**1925 Conlon (24-26), left.** Opening Day, printed in the RH April 30, 1925. This photo shows the pants worn in 1925 had 2 belt loops in front. Photo also shows dark-on-dark striping on the top section of the socks, first worn the previous year.



1925 home

# 1925 HOME, continued

Rochester Tribe, International League



Albert R. Stone Negative Collection, Rochester Museum & Science Center, Rochester, N.Y.



From the Albert R. Stone Negative Collection, Rochester Museum & Science Center, Rochester, N.Y.

**1925 players.** Top left: Tunney (25) and Duggan (25), printed in the RH May 1, 1925. Top right: Conlon (24-26). Bottom left: unidentified.



Negative Collection, Rochester Museum



# 1926 HOME

Rochester Tribe, International League



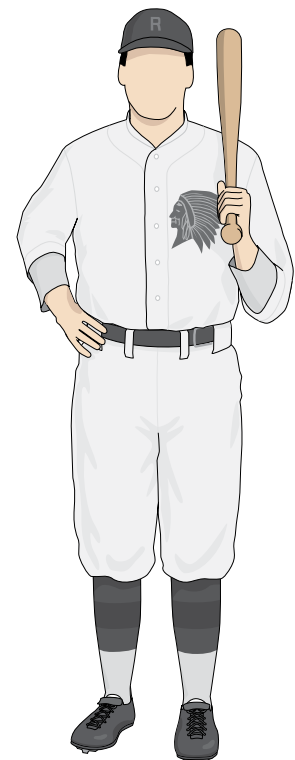
**1926 Onslow (25-27).** Opening Day photo printed in the D&C. Photo shows new Indian head graphic on left breast, 3/4 length sleeves, "sun" collar and belt tunnels at the hips.



Research and drawings  
by Marc Okkonen



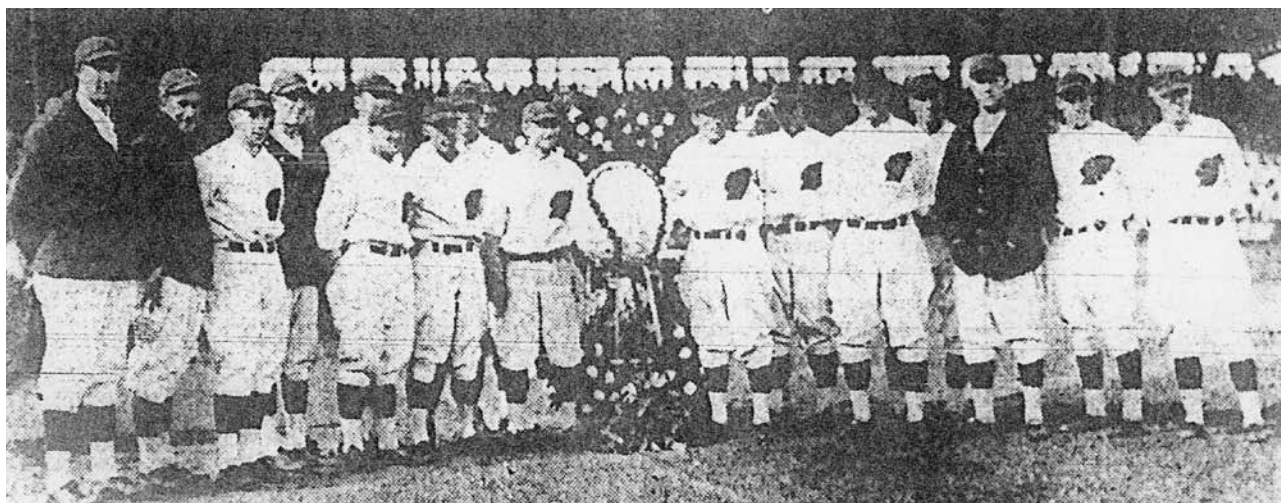
In 1926, Rochester was one of the first pro teams in all of baseball to visualize their team nickname (The Tribe) on their jersey with elaborate embroidery. Philadelphia (AL) had used a simple elephant silhouette between 1921 and 1927. Detroit first displayed an embroidered tiger head graphic on the left breast in 1927, see above left. Cleveland used an Indian head for the first time in 1928, above right.



1926 home (hat details, under sleeves and socks undocumented)

# 1927 HOME

Rochester Tribe, International League



**1927 team.** Opening Day photo printed in the D&C. Indian head on left breast seems to be different in shape and detail when compared to 1926 style.

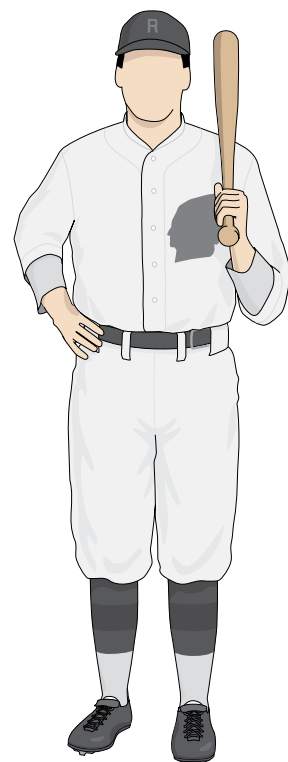


**1927 Fleming (27) and Ryan (27), photo at left. 1929 Myers (29, 31, 33), photo at right.** These photos show an Indian head with embroidered detail, similar to 1926 style. Photo at left was printed in the D&C August 14, 1927. Photo at right was from spring training 1929 where older uniforms were re-used.



## **1929 Ford (28, 29).**

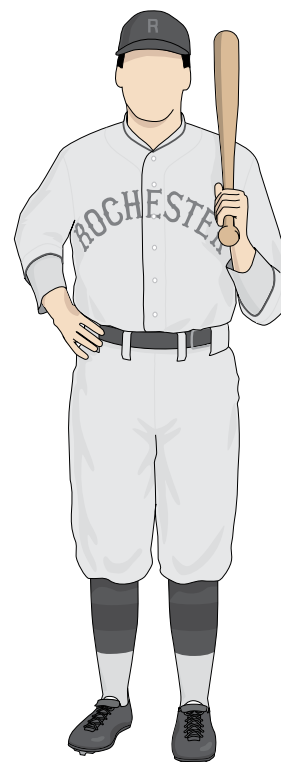
From spring training group photo taken in 1929. Indian head has less embroidery and different shape than 1926 style. This graphic seems to match 1927 opening day photo at top of this page.



1927 home



**1927 Collins (27-30).** Printed in the D&C August 14, 1927, showing "fancy" lettering and dark trim at neck line. More research needed.



1927 road